

## Injury attendances to Fairfield General Hospital Emergency Department

### April 2011 to March 2012

This report summarises recorded injury attendances to Fairfield General Emergency Department (ED) between April 2011 and March 2012.

Between April 2011 and March 2012 there were 25,211 injury attendances to Fairfield General Hospital ED. Males accounted for just over half (54%) of all attendances. The month with the highest injury attendances was July (n=2,393) with December (n=1,840) having the lowest (**Figure 1**). Almost seven in ten (69%) of injury attendances were recorded as other injury. Of the specified injury groups, falls (17%) accounted for the highest proportion followed by road traffic collisions (RTCs) (5%) and assault (5%) (**Table 1**).

For all injury attendances, the highest proportions were for persons aged 5 to 19 (25%) and 20 to 34 years (22%) (**Figure 2**). Almost six in ten (57%) of fall attendees were aged 65 or over. Almost half (49%) of assault attendees were aged 20 to 34 years. Nearly two-fifths (39%) of RTC attendees and over a third (35%) of deliberate self-harm (DSH) attendees were aged 20 to 34 years (**Figure 3**).

**Table 2** shows the location of the incident of injury attendances. Over two-fifths (42%) of injuries occurred in the home. Over one in six (17%) of injuries occurred in a public place with smaller proportions occurring at work (6%) or at an educational establishment (5%). Half (50%) of

assaults occurred in a public place. Over seven in ten (72%) of DSH injuries occurred at home. Almost six in ten (57%) falls occurred in the home.

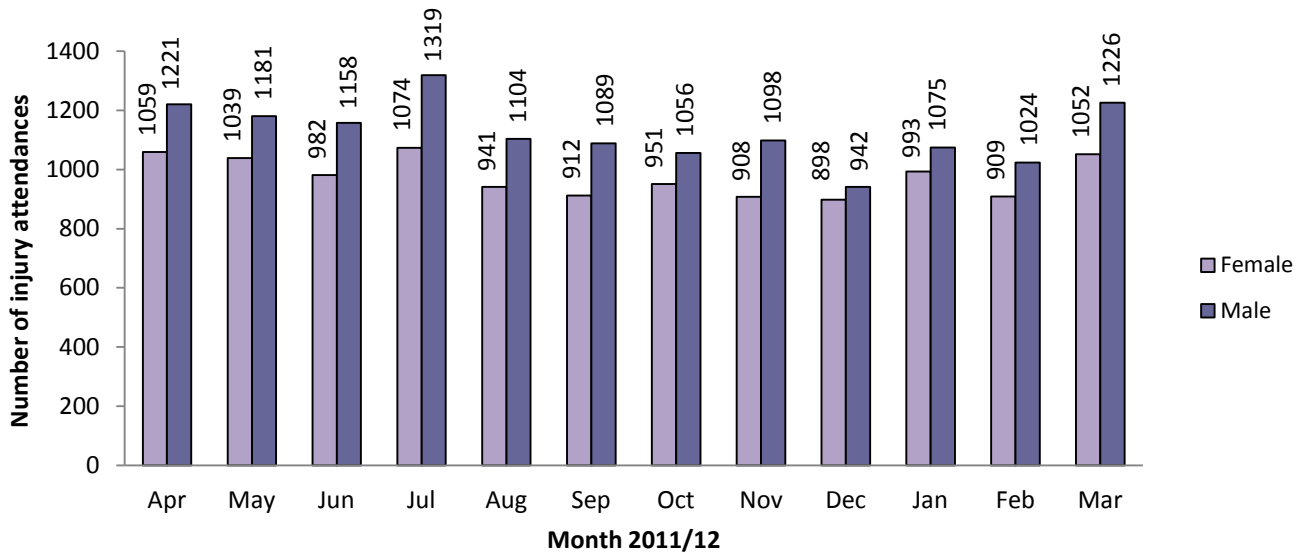
**Table 3** shows the ethnicity of attendees to Fairfield General Hospital ED. Almost nine in ten (86%) were white and 5% were Pakistani.

The disposal of a patient can give an indication of the severity of the injuries sustained. Most (63%) attendees were discharged, over a quarter (26%) had a referral/follow-up and 9% were admitted (**Table 4**). Over three-quarters (76%) of RTC attendees were discharged. Over a quarter (26%) of fall attendees were admitted and over two-fifths (43%) of burns and scalds attendees had a referral/follow-up (**Table 5**).

**Table 6** shows the arrival methods of injury attendances at Fairfield General Hospital ED. Two-thirds (66%) arrived by private transport while over a fifth (22%) arrived by ambulance.

**Table 7** shows assault attendances to Fairfield General ED. Over seven in ten (71%) assault attendees were male and nearly half (49%) were aged 20 to 34 years. Almost half (47%) of assault attendances arrived at the ED by ambulance.

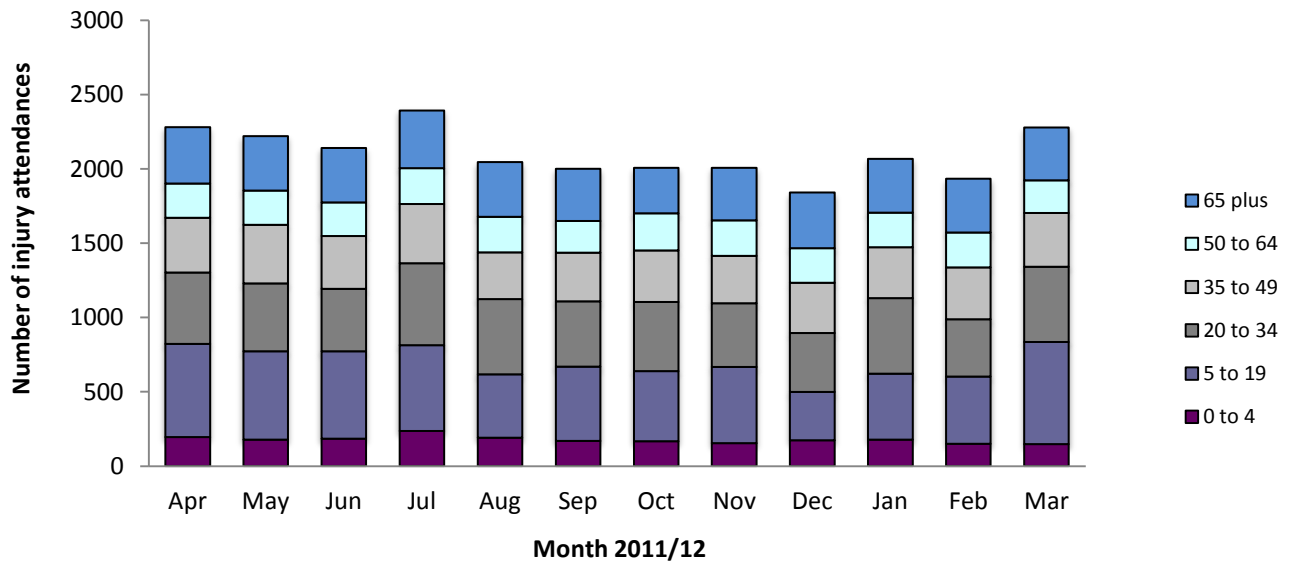
**Figure 1: Fairfield General Hospital ED: Total injury attendances by gender and month, April 2011 to March 2012**



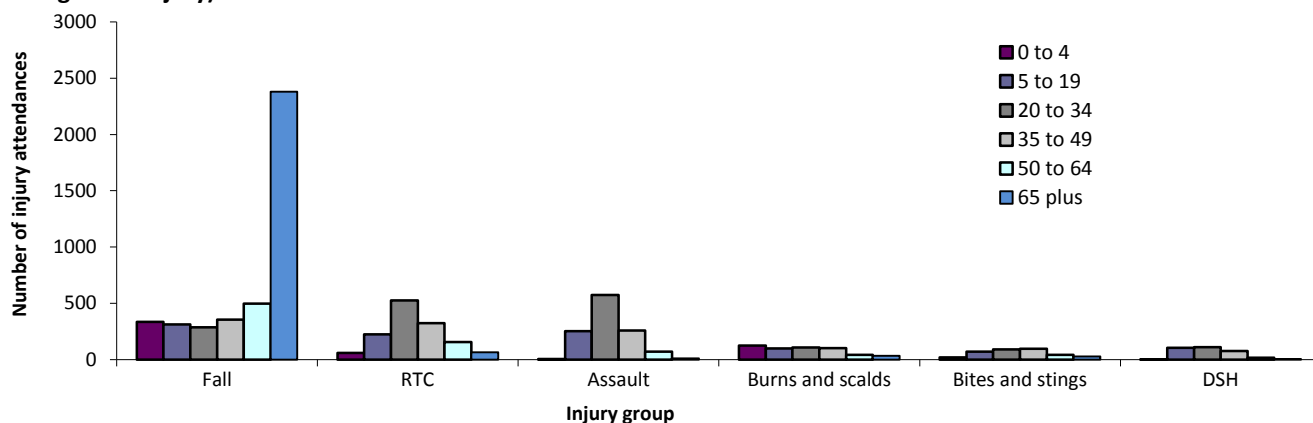
**Table 1: Fairfield General Hospital ED: Total injury attendances by injury group and month, April 2011 to March 2012**

Injury group	Apr	May	Jun	Jul	Aug	Sep	Oct	Nov	Dec	Jan	Feb	Mar	Total	%
Other injury	1615	1623	1527	1736	1400	1300	1359	1371	1094	1340	1285	1696	17346	69
Fall	360	309	351	358	322	383	344	311	406	380	360	282	4166	17
RTC	115	111	90	97	107	121	94	123	136	154	106	99	1353	5
Assault	85	96	79	97	87	83	106	117	113	105	90	115	1173	5
Burns and scalds	57	36	41	55	55	56	26	40	37	34	38	37	512	2
Bites and stings	31	26	31	27	52	28	35	10	24	27	23	33	347	1
DSH	17	19	21	23	22	30	43	34	30	28	31	16	314	1
<b>Total</b>	<b>2280</b>	<b>2220</b>	<b>2140</b>	<b>2393</b>	<b>2045</b>	<b>2001</b>	<b>2007</b>	<b>2006</b>	<b>1840</b>	<b>2068</b>	<b>1933</b>	<b>2278</b>	<b>25211</b>	<b>100</b>

**Figure 2: Fairfield General Hospital ED: Total injury attendances by age group and month, April 2011 to March 2012**



**Figure 3: Fairfield General Hospital ED: Total injury attendances by age group and injury group, April 2011 to March 2012 (excluding other injury)**



**Table 2: Fairfield General Hospital ED: Total injury attendances by location of incident and injury group, April 2011 to March 2012<sup>1,2</sup>**

Location	Assault		Bites and stings		Burns and scalds		DSH		Fall		Other injury		RTC		Total	
	n	%	n	%	n	%	n	%	n	%	n	%	n	%	n	%
Home	262	22	137	39	266	52	225	72	2388	57	7186	41	11	1	10475	42
Other	222	19	51	15	72	14	50	16	381	9	3687	21	1306	97	5769	23
Public place	589	50	97	28	***	3	***	8	836	20	2738	16	***	1	4315	17
Not recorded	24	2	30	9	108	21	11	4	418	10	1389	8	16	1	1996	8
Work	57	5	32	9	50	10	0	0	80	2	1271	7	5	0	1495	6
Educational establishment	19	2	0	0	***	0	***	1	63	2	1075	6	***	0	1161	5
<b>Total</b>	<b>1173</b>	<b>100</b>	<b>347</b>	<b>100</b>	<b>512</b>	<b>100</b>	<b>314</b>	<b>100</b>	<b>4166</b>	<b>100</b>	<b>17346</b>	<b>100</b>	<b>1353</b>	<b>100</b>	<b>25211</b>	<b>100</b>

**Table 3: Fairfield General Hospital ED: Total injury attendances by ethnicity and month, April 2011 to March 2012<sup>3</sup>**

Ethnicity	Apr	May	Jun	Jul	Aug	Sep	Oct	Nov	Dec	Jan	Feb	Mar	Total	%
White	1998	1899	1865	2079	1797	1702	1732	1746	1606	1752	1644	1981	21801	86
Pakistani	117	132	109	108	94	125	115	105	100	121	133	103	1362	5
Not known	71	86	79	100	72	72	75	76	53	82	67	95	928	4
Any other ethnic group	38	47	30	52	37	45	40	43	33	36	40	30	471	2
Any other Asian background	21	20	19	14	11	21	7	17	14	25	14	27	210	1
Black	5	13	7	15	13	10	18	12	21	18	13	12	157	1
Mixed	11	9	14	20	13	13	17	***	7	24	***	12	149	1
Bangladeshi	***	10	***	***	***	8	***	***	***	6	6	11	66	0
Indian	7	***	8	***	***	***	***	***	***	***	9	***	43	0
Chinese	***	***	***	***	***	***	***	***	***	***	***	***	24	0
<b>Total</b>	<b>2280</b>	<b>2220</b>	<b>2140</b>	<b>2393</b>	<b>2045</b>	<b>2001</b>	<b>2007</b>	<b>2006</b>	<b>1840</b>	<b>2068</b>	<b>1933</b>	<b>2278</b>	<b>25211</b>	<b>100</b>

**Table 4: Fairfield General Hospital ED: Total injury attendances by method of disposal and month, April 2011 to March 2012<sup>4</sup>**

Disposal	Apr	May	Jun	Jul	Aug	Sep	Oct	Nov	Dec	Jan	Feb	Mar	Total	%
Discharged	1432	1382	1396	1544	1291	1402	1371	1225	1162	1263	1111	1333	15912	63
Referral/follow-up	570	612	534	614	515	395	438	564	441	598	598	777	6656	26
Admitted	246	203	197	212	208	177	176	192	202	190	203	152	2358	9
Other	32	23	13	23	31	27	22	25	35	17	21	16	285	1
<b>Total</b>	<b>2280</b>	<b>2220</b>	<b>2140</b>	<b>2393</b>	<b>2045</b>	<b>2001</b>	<b>2007</b>	<b>2006</b>	<b>1840</b>	<b>2068</b>	<b>1933</b>	<b>2278</b>	<b>25211</b>	<b>100</b>

<sup>1</sup> Please note that all numbers less than five have been suppressed (\*\*\*) in line with patient confidentiality and if there is only one number less than five in a category then two numbers will be suppressed at the next level.

<sup>2</sup> Percentages may not add up to a hundred due to rounding.

<sup>3</sup> White = Irish, British, other white background; Mixed = white and black, white and Asian, mixed other; Other = any other ethnic group, any other Asian background; Black = African, Caribbean, other black.

<sup>4</sup> Admitted=admitted to ED bed/became a lodged patient of the same health care provider; Discharged=discharged - did not require any follow-up treatment; Referred/follow-up =discharged - follow-up treatment to be provided by GP, referred to ED clinic, referred to fracture clinic, referred to other out-patient clinic, transferred to other health care provider, referred to other health care professional; Other=died in department, left department before being treated, left department having refused treatment, other.

**Table 5: Fairfield General Hospital ED: Total injury attendances by method of disposal and injury group, April 2011 to March 2012**

Disposal	Assault		Bites and stings		Burns and scalds		DSH		Fall		Other injury		RTC		Total	
	n	%	n	%	n	%	n	%	n	%	n	%	n	%	n	%
Discharged	697	59	229	66	249	49	150	48	2155	52	11398	66	1034	76	15912	63
Referral/follow-up	245	21	103	30	221	43	56	18	860	21	4920	28	251	19	6656	26
Admitted	122	10	***	3	***	6	67	21	1097	26	978	6	49	4	2358	9
Other	109	9	***	1	***	2	41	13	54	1	50	0	19	1	285	1
<b>Total</b>	<b>1173</b>	<b>100</b>	<b>347</b>	<b>100</b>	<b>512</b>	<b>100</b>	<b>314</b>	<b>100</b>	<b>4166</b>	<b>100</b>	<b>17346</b>	<b>100</b>	<b>1353</b>	<b>100</b>	<b>25211</b>	<b>100</b>

**Table 6: Fairfield General Hospital ED: Total injury attendances by mode of arrival and month, April 2011 to March 2012**

Arrival mode	Apr	May	Jun	Jul	Aug	Sep	Oct	Nov	Dec	Jan	Feb	Mar	Total	%
Private transport	1512	1483	1415	1575	1373	1322	1297	1304	1130	1305	1197	1616	16529	66
Ambulance	476	450	467	489	442	445	463	461	497	491	475	335	5491	22
Unknown	116	123	111	119	89	98	99	88	88	110	106	140	1287	5
Taxi	76	93	64	96	60	52	61	55	55	79	57	79	827	3
Public transport	47	30	36	45	31	30	32	45	19	29	36	48	428	2
Foot	39	24	25	39	28	28	27	25	18	26	19	33	331	1
Police	9	10	11	16	10	14	14	13	18	18	26	17	176	1
Work transport	***	***	***	9	***	7	9	7	10	***	5	***	79	0
Other	***	***	***	5	***	5	5	8	5	***	12	***	63	0
<b>Total</b>	<b>2280</b>	<b>2220</b>	<b>2140</b>	<b>2393</b>	<b>2045</b>	<b>2001</b>	<b>2007</b>	<b>2006</b>	<b>1840</b>	<b>2068</b>	<b>1933</b>	<b>2278</b>	<b>25211</b>	<b>100</b>

**Table 7: Fairfield General Hospital ED: Total injury attendances by mode of arrival, gender and age group, April 2011 to March 2012**

Injury type	Assault attendees		All injuries % (n=25,211)
	n	%	
<b>Gender</b>			
Female	336	29	46
Male	837	71	54
<b>Mode of arrival</b>			
Ambulance	550	47	22
Other	623	53	78
<b>Age group</b>			
0 - 4	5	0	8
5 - 19	253	22	25
20 - 34	573	49	22
35 - 49	258	22	17
50 - 64	72	6	11
65 plus	12	1	17

Author: Ian Warren, Published: May 2012

For further information contact: Centre for Public Health, Research Directorate, Liverpool John Moores University,  
2nd Floor, Henry Cotton Building, 15-21 Webster Street, Liverpool, L3 2ET

Tel: 0151 231 4513 or Email: [i.j.warren@ljmu.ac.uk](mailto:i.j.warren@ljmu.ac.uk) Website: [www.tiig.info](http://www.tiig.info) (data requests should be made through the website)